

## Quiz 5, Math 372

6/26/25

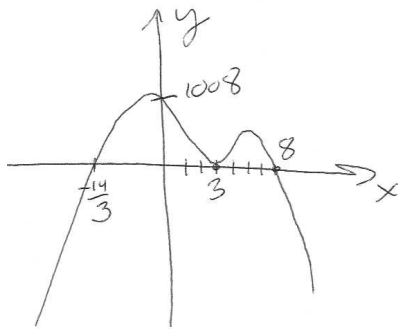
1) Graph:  $y = (x - 3)^2(3x + 14)(8 - x)$

Note:  $y$ -intercept is 1008.

2) Write an equation for a graph with  $x$ -intercepts  $-2$  and  $7$ .

Ans

1)



2)  $y = (x + 2)(x - 7)$

Answers may vary