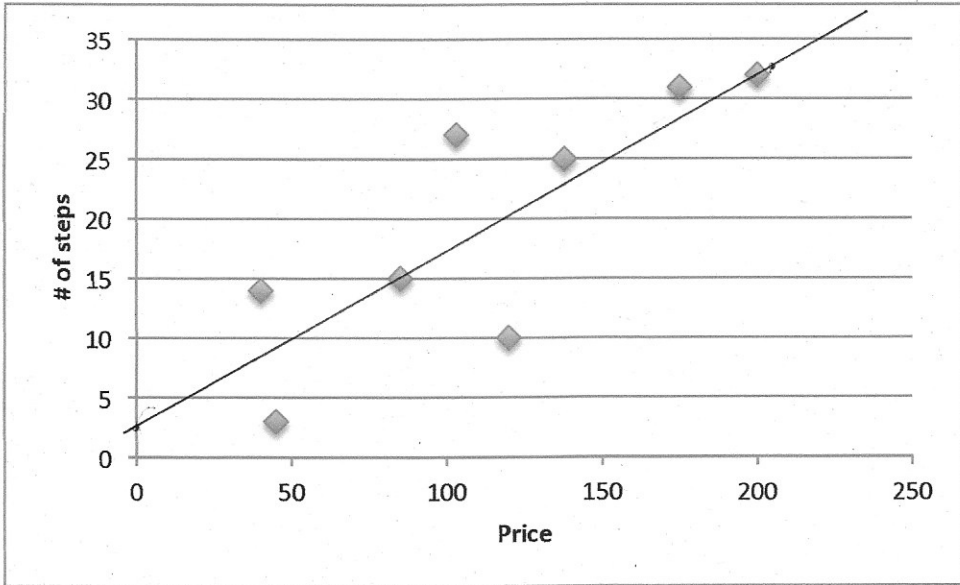


1)



b) $\hat{y} = 0.1503x + 2.602$

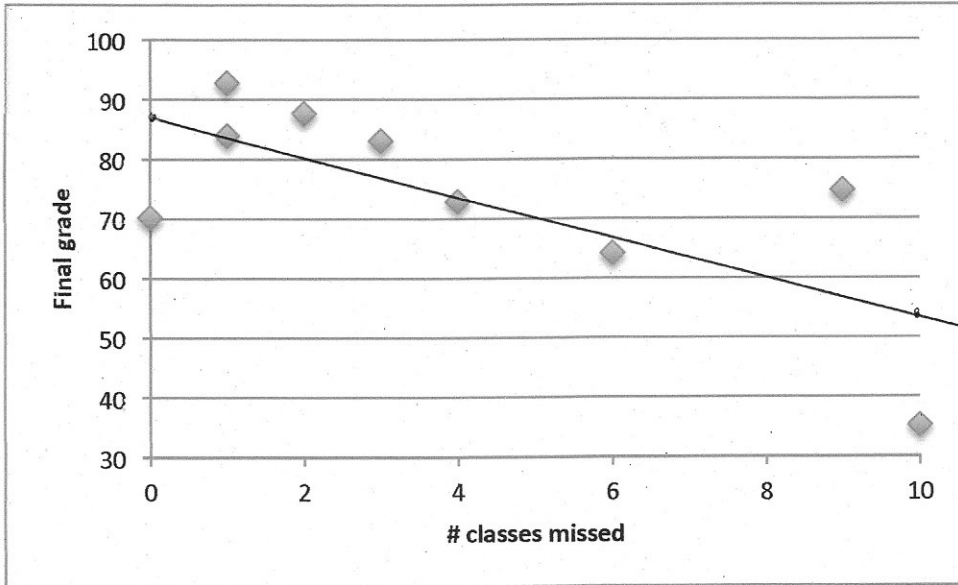
c) $r = 0.81$, strong positive correlation

d) 25 steps

e) 7 or 8 steps more

f) \$103 item has 9 more steps than predicted

2)



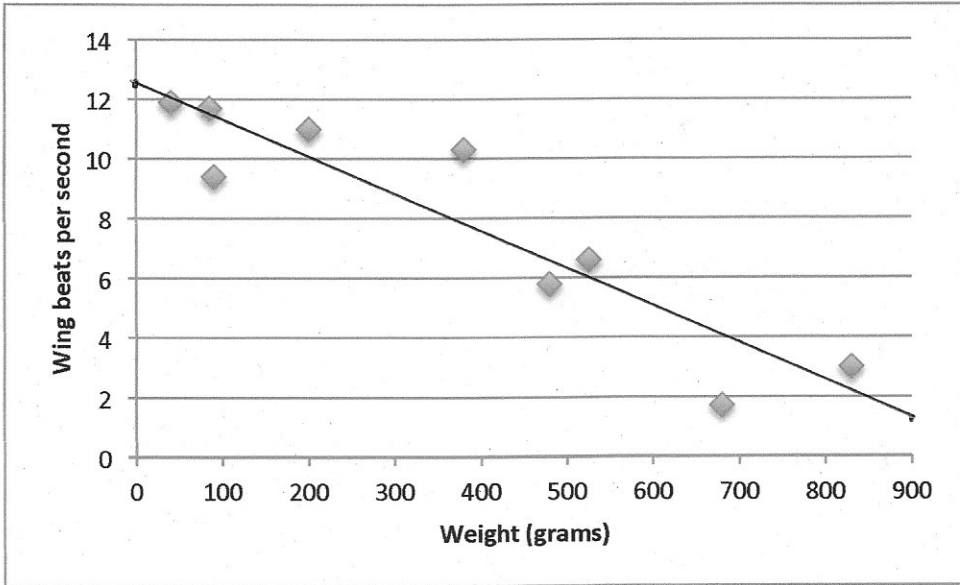
b) $\hat{y} = -3.426x + 87.6$

c) $r = -0.72$, strong-to-moderate negative correlation

d) # classes missed. Because this happens earlier in time than the final grade

e) negative. One would assume that missing more classes leads to a lower grade.

3)



b) $\hat{y} = -0.01237x + 12.5$

c) $r = -0.92$, strong negative correlation

d) 3.8 beats per second

e) lower by 1.2 beats per second

f) 380-gram bird is 2.5 beats per second more than expected